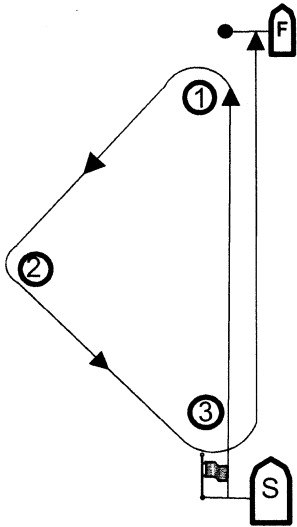


Course Diagrams Attachment A

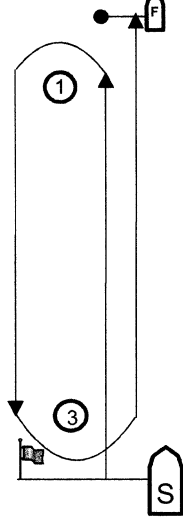
Actual angle between legs will vary depending on available racing area
Course designators show number of legs to be sailed
Gate marks are not a mark of the course on the leg before finishing downwind

"Triangle – Upwind Finish = U"



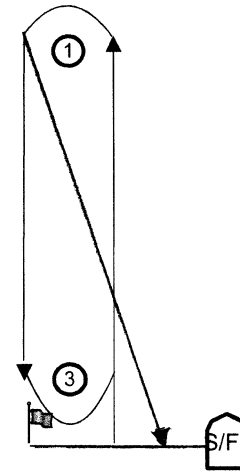
- TU-4 S-1-2-3-F
- TU-7 S-1-2-3-1-2-3-F
- TU-10 S-1-2-3-1-2-3-1-2-3-F

"Windward Leeward – Upwind Finish = U"



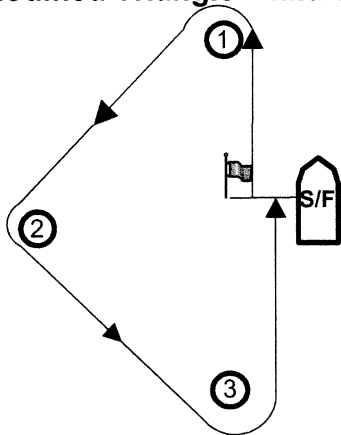
- WLU-3 S-1-3-F
- WLU-5 S-1-3-1-3-F
- WLU-7 S-1-3-1-3-1-3-F

"Windward Leeward – Downwind Finish = D"



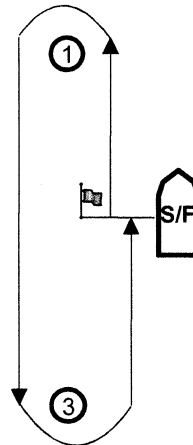
- WLD-4 S-1-3-1-F
- WLD-6 S-1-3-1-3-1-F
- WLD-8 S-1-3-1-3-1-3-1-F

"Modified Triangle – Mid Start & Finish"



- MT-4 S-1-2-3-F
- MT-7 S-1-2-3-1-2-3-F

"Modified Windward Leeward – Mid Start & Finish"



- MWL-3 S-1-3-F
- MWL-5 S-1-3-1-3-F